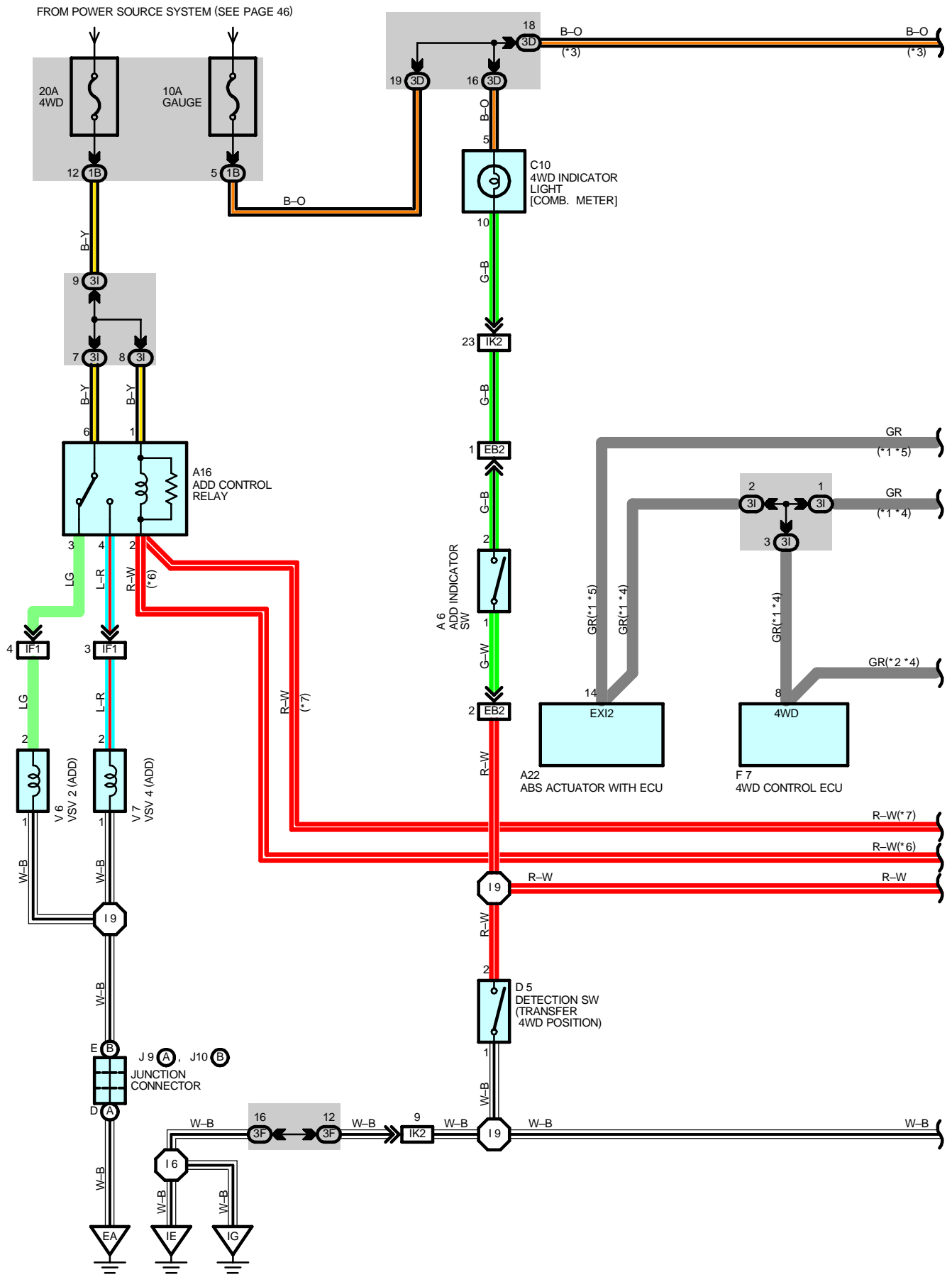


4WD (w/o 2-4 SELECT SW EXCEPT CALIFORNIA)



4WD (w/o 2-4 SELECT SW EXCEPT CALIFORNIA)

SERVICE HINTS

A16 ADD CONTROL RELAY

3-6 : Closed with ignition SW at **OFF** position or ignition SW on and detection SW (Transfer 4WD position) at **OFF** position

4-6 : Closed with ignition SW at **ON** position or ignition SW on and detection SW (Transfer 4WD position) at **ON** position

P1 A/T INDICATOR SW [PARK/NEUTRAL POSITION SW]

4-7 : Closed with A/T shift position at **P** position

D4 DETECTION SW (TRANSFER NEUTRAL POSITION)

1-2 : Closed with transfer position at **N** position

○ : PARTS LOCATION

Code	See Page	Code	See Page	Code	See Page
A6	28 (5VZ-FE) 30 (3RZ-FE)	D4	30 (3RZ-FE) 28 (5VZ-FE)	J10 B	31 (3RZ-FE)
A16	32	D5	30 (3RZ-FE)	J12	33
A22	28 (5VZ-FE) 30 (3RZ-FE)	E5 A	33	P1	29 (5VZ-FE) 31 (3RZ-FE)
C10	32	E6 B	33	V6	29 (5VZ-FE) 31 (3RZ-FE)
C13	32	E8 D	33	V7	29 (5VZ-FE) 31 (3RZ-FE)
D3	28 (5VZ-FE) 30 (3RZ-FE)	F7	33		
D4	28 (5VZ-FE)	J9 A	29 (5VZ-FE) 31 (3RZ-FE)		
		J10 B	29 (5VZ-FE)		

○ : JUNCTION BLOCK AND WIRE HARNESS CONNECTOR

Code	See Page	Junction Block and Wire Harness (Connector Location)
1B	22	Cowl Wire and J/B No.1 (Lower Finish Panel)
3D	24	Cowl Wire and J/B No.3 (Behind the Instrument Panel Left)
3F		
3G	26	Cowl Wire and J/B No.3 (Behind the Instrument Panel Center)
3I		

□ : CONNECTOR JOINING WIRE HARNESS AND WIRE HARNESS

Code	See Page	Joining Wire Harness and Wire Harness (Connector Location)
EB2	36 (5VZ-FE) 38 (3RZ-FE)	Engine Wire and Differential Wire (Front Differential Upper Side)
IF1	40	Engine Room Main Wire and Cowl Wire (Left Kick Panel)
IK2	40	Engine Wire and Cowl Wire (Right Kick Panel)
IK3		

▽ : GROUND POINTS

Code	See Page	Ground Points Location
EA	36 (5VZ-FE) 38 (3RZ-FE)	Front Left Fender
IE	40	Around the Right Edge of the Reinforcement
IG	40	Around the Left Edge of the Reinforcement

○ : SPLICE POINTS

Code	See Page	Wire Harness with Splice Points	Code	See Page	Wire Harness with Splice Points
I6	40	Cowl Wire	I9	40	Cowl Wire

